

# LM SERIES LARGE-FRAME TELEHANDLERS

LM6.32 | LM7.42 Classic | LM7.42 Elite | LM9.35



# The ultimate material handling multi-tool.

At New Holland, we listen to our customers. We understand the difference between operators requiring a telehandler with the reach to pick up, transport and stack large bales to those who need a machine that sees daily use for livestock duties—and everything in between. New Holland has models designed to meet these varying demands. One is certain to become the ultimate material handling multi-tool for your applications.

Models		LM6.32	LM7.42 Classic	LM7.42 Elite	LM9.35
Max lift height	ft (m)	20.6 (6.3)	22.9 (7.0)	22.9 (7.0)	29.8 (9.1)
Max lift capacity	lbs. (kg)	7,054 (3200)	9,259 (4200)	9,259 (4200)	7,716 (3500)



### Four large-frame models, countless applications

Choose from four New Holland large-frame telehandlers—the LM6.32, LM7.42 Classic, LM7.42 Elite or the LM9.35. Equipped with Tier4B, 4.5-liter NEF engines, all provide responsive power for dozens of applications including picking up, transporting and stacking large bales. A broad range of buckets and attachments you can swap quickly means you can handle more jobs.



#### Elite power delivers optimum performance

With 143 max power, the LM7.42 Elite provides higher power, enhanced performance and deluxe comfort for demanding farm and contract operators who want a dedicated material handling machine for the most challenging applications. The Elite's 6F/3R powershift transmission includes an Auto mode in speeds 4, 5 and 6 for optimum efficiency and ease. This model also features convenient, armrest-mounted controls, a limited-slip differential on both front and rear axles, and a high power-to-weight ratio for heavy material handling tasks.

#### LM6.32, LM7.42 Classic and LM9.35 – A standard specification to suit your needs

If you're looking for a machine dedicated to scooping, stacking or loading with the standard comforts of an ag tractor, New Holland offers three affordable large-frame standard-configuration models that are the ideal choice for broad-acre, mixed farm and contract applications. Each boasts 130 max horsepower, full-time 4WD, front limited slip differential, three steering modes and a 4F/3R powershift transmission for smooth operation.



#### Tough construction, comfortable operation

No matter which model you choose, you get a telehandler that's built for severe duty, with a rugged frame, heavy-duty boom construction, and ample hydraulics. Operators will appreciate the Vision 360 cab. It provides unparalleled visibility and comfort that makes a real difference in the quality of each working day.



# Clean performance, responsive productivity.



Large-frame LM telehandlers are powered by Tier 4B NEF 4.5 liter, four-cylinder FPT engines. Proven in the New Holland T6 tractor models, these exceptionally clean-running engines employ ECOBlue™ HI-eSCR technology, have a long 600-hour service interval and a proven dependability record. Rated power outputs are 119 horsepower for the LM6.32, LM7.42 Classic and LM9.35 and 129 horsepower for the LM7.42 Elite. These figures climb to 130 and 143 horsepower as engine speed drops to 1,800 rpm (1,900 rpm for LM7.42 Elite). To minimize power loss, the engine flywheel connects directly to the transmission via a heavy-duty

11-inch [280mm] torque converter, a transfer box directing power to the front and rear axles. All four models achieve a maximum 22.9-mph transport speed (with 460/70R24 tires) and transport mode engages automatically in third gear or at speeds exceeding 7.5 mph. This locks the rear steering wheels in the straight-ahead position, allowing steering from the front axle only.

**ECOBBlue™ HI-eSCR**

Models		LM6.32, LM7.42 Classic, LM9.35	LM7.42 Elite
Rated Power @ 2,200 rpm	hp (kW)	119 (89)	129 (96)
Max Power @ 1,800 (1,900 rpm for Elite)	hp (kW)	130 (97)	143 (105)
Fuel tank capacity	gal. (l)	36.9 (140)	36.9 (140)
AdBlue tank capacity	gal. (l)	7 (27)	7 (27)
Powershift speeds (Forward / Reverse)		4 / 3	6 / 3



### Reversing fans keep everything cool

Engage the standard reversing fan and every six minutes the engine and cooling package fan reverses direction for 15 seconds. This helps blow dust and contaminants from the engine radiator, oil cooler and intercooler and also helps keep the external engine hood screens free of debris. Working to the same cycle, two separate electrical fans reverse to clean the air conditioning, fuel cooler and transmission radiators.

### Complete and easy engine access

Daily checks and servicing are easy because New Holland makes it simple to reach the engine. The hood opens to reveal the main cooling package and the top half of the engine, while two door panels open for full access to the engine compartment. The right-hand door folds out, giving you complete access to the secondary cooling package for shorter service times and easier cleaning.



# Highly maneuverable and efficient.

Work in restricted spaces and tough conditions thanks to the traction, maneuverability and hydraulic power of New Holland telehandlers.

## Full-time 4WD and auto traction control

Large-frame LM telehandlers have full-time 4WD (four-wheel drive) and a front limited-slip differential as standard equipment. Developed specifically for telehandler applications, the differential directs up to 45% of available torque across the axle to ensure the wheel with the greatest traction always get power. A locking rear differential is standard on the LM7.42 Elite.



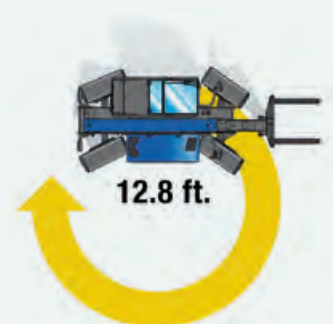
## Hydraulic wet disk brakes

Designed to offer long life with minimal maintenance, the sealed wet disc brakes in both of the LM telehandler axles are designed to operate at higher transport speeds. The parking brake\* is activated via a dash-mounted switch.

\*SAHR system (Spring Applied Hydraulic Release)

## Maneuver easily around obstacles

Four-wheel steering mode provides the large-frame LM telehandlers with a turning radius of just 12.8 feet, tight enough to maneuver around many obstacles. Crab steer mode creates the ability to move a load into or out of an area in a diagonal direction to easily maneuver around posts or immovable objects. Front-wheel steering works well for general use and transport applications, allowing you to operate the telehandler just like a standard tractor. The LM7.42 Elite also features auto wheel alignment when switching between all-wheel, crab and front steering.





### Bigger tires

Large-frame telehandlers are equipped with 460/70R24 tires as standard. These are the ideal size for general-purpose applications and yard work. Wider 500/70R24 are available to enhance flotation—a plus when hauling heavy bales across the field. Ground clearance at the lowest point under the axles is more than enough for your daily chores or working over rough terrain.

### LM7.42 Elite offers auto advancement

The 6F/3R powershift transmission on the LM7.42 Elite gives you the ability to select Auto mode. Effective in speeds 4, 5 and 6, Auto mode automatically changes gears to select the most appropriate gear in relation to engine and forward speed, making it ideal for transport duties. Top speed ranges up to 23.7 mph (tire dependent). To enhance the ease of operation, all gear and direction changes can be made using the armrest-mounted joystick. For those who prefer it, a column-mounted shuttle lever is also available.

### LM6.32, LM7.42 Classic and LM9.35 transmission is effectively simple

A full powershift 4F/3R (four-forward and three-reverse speed) transmission is standard on the LM6.32, LM7.42 Classic and LM9.35, with clutch-free changes between each gear. Simply choose speeds using buttons on the console-mounted joystick, and make direction changes with the forward-reverse shuttle lever on the steering column.



## Powerful hydraulics deliver fast work cycles.

Efficient hydraulics are key to telehandler productivity. This goes beyond pump capacity. Efficient use of available oil, optimized ram sizes and effective control valves all make a contribution to overall performance. Large-frame LM Series telehandlers benefit from New Holland's 15 years of telehandler development and careful attention to the design of the hydraulic circuit—not just improving cycle times but also ensuring performance is maintained in demanding conditions, including extreme heat. Options include a set of rear remotes and additional boom mounted valves to control external attachments.

### Variable pump delivers high output at low engine speeds

All models come equipped with a high-performance, variable displacement piston pump that has a maximum output of 36.9 gallons per minute (gpm). Pump features include the ability to deliver a high rate of flow at all engine speeds, and to also close down when there is no demand on the system. This allows more engine power to be diverted to the transmission, which is of particular value during transport and when climbing a steep slope. As soon as there is a demand for hydraulic flow, the pump delivers.

### Gear pump simplicity linked to advanced control

LM6.32 and LM9.35 telehandlers have the option of a 31.7-gpm gear pump for operations where the high-performance, variable displacement piston pump is not needed. To optimize performance, the console-mounted joystick operates electro-hydraulic valves. Not only does this deliver full proportional control, it also allows you to operate more than one function for optimum productivity.

# Exceptional comfort and visibility enhances your productivity.

New Holland's extensive research led to development of the 360 Vision Cab. Offering class-leading space and comfort, the cab affords excellent all-around visibility with an unparalleled view of the front of the forks when fully lowered. Not only does the extra visibility boost loader work productivity but it also speeds up attachment changeovers.

## More glass, clear visibility

A key design objective for the 360 Vision Cab was to reduce 'blind spots' over the front of the boom, particularly when fully raised and fully lowered. By combining a wide and deep front screen with slim 'A' pillars, the visibility from the seat is greatly enhanced.

## Engineered for low noise

The best way to reduce noise is to eliminate its sources. By combining a number of design developments, large-frame LM telehandler in-cab noise levels are just 75dB(A). A key to the low noise levels is the SCR-equipped engines. These clean-running power units also offer exceptionally low bystander noise levels.







### Highly visible night mode

A clear night view is possible with multiple work lights mounted to the front and rear of the cab and at the end of the boom. The LM7.42 Elite comes standard with a total of 10 LED lights (5 front facing, 3 rear facing and 2 side facing). LM6.32, LM7.42 Classic and LM9.35 models feature up to 8 LED lights (5 front facing and 3 rear facing) added as an option.



### LM6.32, LM7.42 Classic and LM9.35 cab and controls

For LM6.32, LM7.42 Classic and LM9.35 telehandlers, the electrohydraulic joystick is mounted on the console, with the forward/reverse shuttle on the steering column. Neutral and transmission shift buttons are on the joystick. An air suspension seat and tilt steering wheel provide enhanced operator comfort.

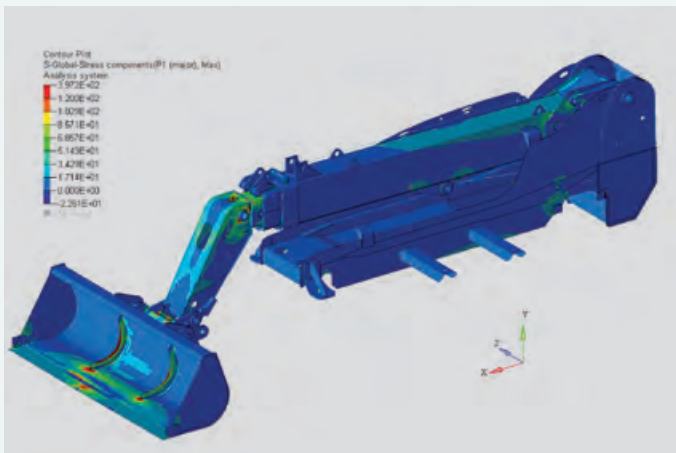
### LM7.42 Elite cab and controls

The LM7.42 Elite air suspension seat combined with armrest-mounted controls provide the ultimate in cab operator comfort. The electronic joystick is mounted on the seat armrest and includes the transmission shift, neutral and forward/reverse shuttle buttons. The adjustable tilt and telescopic steering wheel has a column-mounted shuttle lever for the comfort of operators who are used to a power shuttle on a tractor.



# Strength by design.

Strength and durability are key components of a reliable material handling machine which is why the large-frame LM Series telehandler boom and frame are designed to be more robust and durable than ever. In addition, the perfectly balanced design of the rear boom provides a natural counter balance when lifting to provide additional stability and operator safety.



## Rugged boom construction

Based around twin U-shaped 0.39- to 0.47-inch (10- to 12-mm) thick sections, the boom is immensely strong, with heavy-duty pivot pins for optimum durability. Wear pads adjust quickly using a simple screw and lock nut design, without the need for special tools.

## Stack higher

The low-profile headstock features an attachment angle of almost 45 degrees compared to 90 degrees of previous models. The lower-profile design allows you to stack loads closer to the roof. The standard carrier tilt angle is 142 degrees. As an option, you can choose a less aggressive carrier with only 128 degrees on the LM6.28 or LM9.35. The hydraulic attachment lock allows you to quickly hook-up any Manitou-style attachment.

## Heavy-duty chassis

The one-piece H-shape ladder chassis is made from one-inch-thick, high tensile steel that is fully robot-welded to ensure exceptional torsional rigidity. The boom support is exceptionally strong, and its mass helps to counterbalance heavy loads.

## A smooth, stable ride

New Holland has engineered the chassis with 40/60 weight distribution to eliminate the need for a counterweight. The design delivers excellent stability and traction when loaded. The mass that would be used in a counterweight is instead built into the chassis to boost its strength.

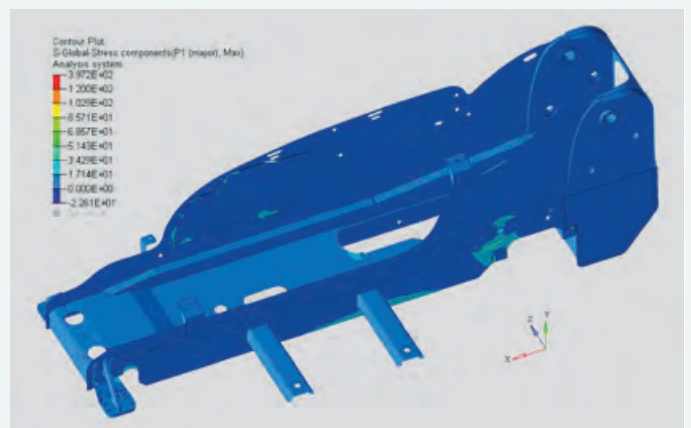


## Optional boom float

A boom float option is available. When engaged by the operator, the boom float option allows the attachment to follow the contour of the ground, which is ideal for applications such as ground leveling. The system automatically deactivates when the boom exceeds a 35-degree lift angle. Boom float is available on LM6.32, LM7.42 Classic and LM9.35 models.

## Shock load protection

Hydraulic end-stroke dampers are incorporated into the boom rams, automatically ensuring the boom smoothly and fully extends and returns to its fully retracted position. This hydraulic damping helps protect the boom and operator from shock loads.





Smooth Ride boom suspension provides an even ride by reducing shock loads when working over difficult terrain. Simply engage or disengage this feature via a rocker switch. The system automatically deactivates when the boom exceeds a 35-degree lift angle to ensure stability and provide precise control of the load. This system is standard on LM7.42 Elite models and optional on LM6.32, LM7.42 Classic and LM9.35 models.

# A wide offering of attachments makes LM telehandlers extremely versatile.

Turned loose with the right attachments, large-frame LM telehandlers take care of all sorts of big jobs quickly. In addition to the long list of available Manitou-style attachments, adapter plates are available to mount skid steer or Matbro attachments. The standard in-cab hydraulic attachment locking system and boom auxiliary hydraulics make the LM telehandler even more versatile as a multi-tool carrier. So, the question of, "What would I do with a LM telehandler?" very quickly changes to "What would I do without one?"



## BALE HANDLING

- Dual round bale spike
- Large square bale grab
- Large square bale fork

## TRUSS BOOM

- 12 foot

## SILAGE BUNKER DEFACER

One set of boom hydraulics is standard equipment, with the option to add a second set, turning your telehandler into a true multi-tool carrier. An optional continuous flow feature allows the auxiliary circuit to operate attachments with hydraulic motors such as silage defacers, rotary brooms and augers.



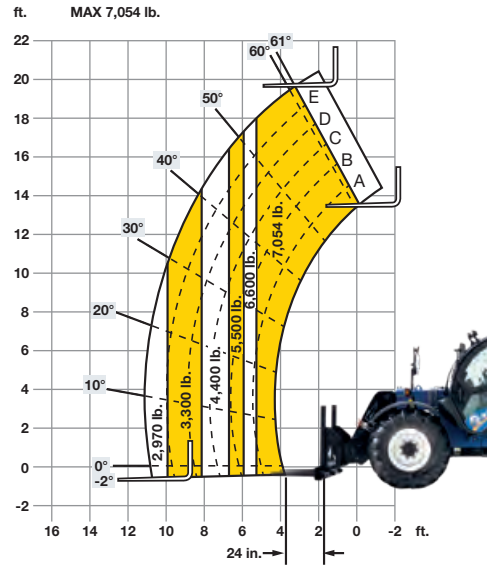
**BUCKETS**

- 2.25 yd<sup>3</sup> x 96 in.
- 3.25 yd<sup>3</sup> x 96 in.
- 2.15 yd<sup>3</sup> x 96 in. with grapple

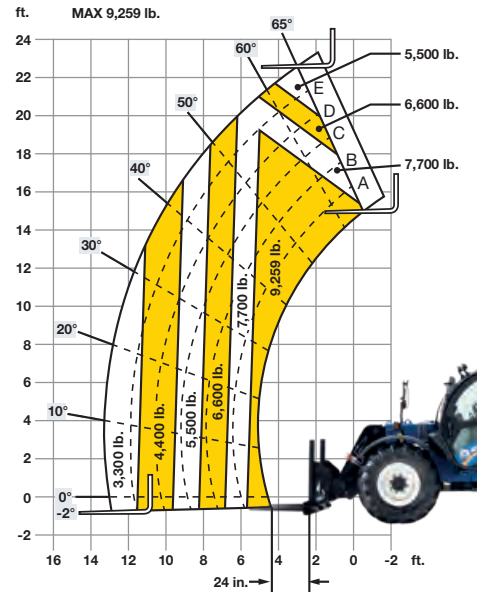
**PALLET FORKS**

- 48-inch pallet forks (set of 2) 4 in. wide x 1.75 in. thick
- 60-inch pallet forks (set of 2) 4 in. wide x 2 in. thick

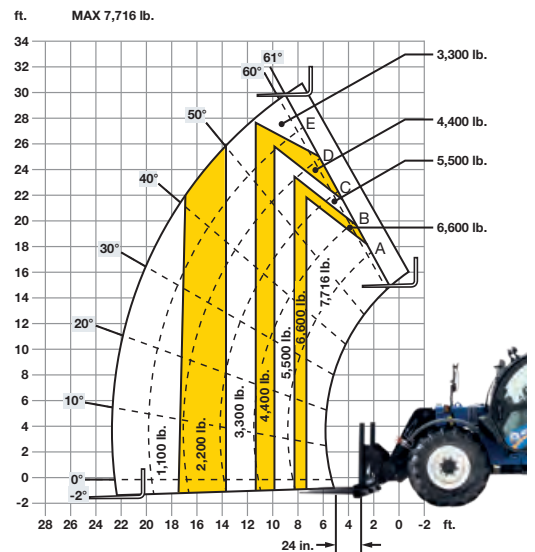
**LM6.32  
LOAD CHART**



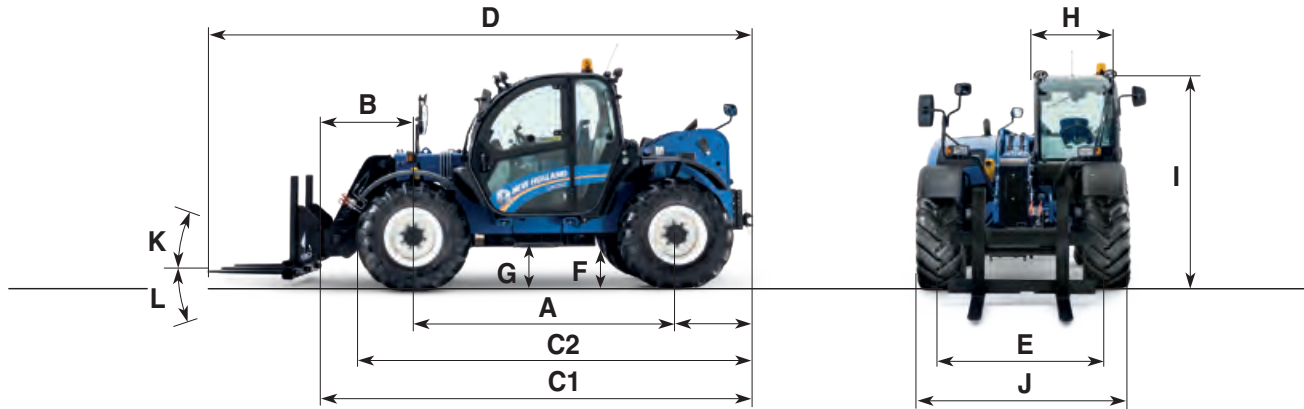
**LM7.42  
CLASSIC/ELITE  
LOAD CHART**



**LM9.35  
LOAD  
CHART**



MODELS		LM6.32	LM7.42 Classic	LM7.42 Elite	LM9.35
<b>Engine</b>					
Type		4 Cylinders - NEF Tier 4B common rail	4 Cylinders - NEF Tier 4B common rail	4 Cylinders - NEF Tier 4B common rail	4 Cylinders - NEF Tier 4B common rail
ECOBlue™ HI-eSCR system (Selective Catalytic Reduction)		●	●	●	●
Aspiration		Turbo intercooler	Turbo intercooler	Turbo intercooler	Turbo intercooler
Displacement	cu. in. (L)	274 (4.5)	274 (4.5)	274 (4.5)	274 (4.5)
Max power ISO14396 - ECE R120 @ rpm	hp (kW)	130 (97) @ 1800	130 (97) @ 1800	143 (105) @ 1900	130 (97) @ 1800
Rated power ISO14396 - ECE R120 @ rpm	hp (kW)	119 (89) @ 2200	119 (89) @ 2200	129 (96) @ 2200	119 (89) @ 2200
Max. torque ISO14396 - ECE R120 @ rpm	ft. lbs. (Nm)	367 (498) @ 1500	367 (498) @ 1500	435 (590) @ 1500	367 (498) @ 1500
<b>Transmission</b>					
Type		PowerShift™	PowerShift™	PowerShift™	PowerShift™
Speed		4x3	4x3	6x3 Auto-Shift	4x3
Transmission shifting		Incorporated on joystick	Incorporated on joystick	Incorporated on joystick	Incorporated on joystick
F-N-R Integrated on joystick		—	—	●	—
F-N-R Lever on steering column		●	●	●	●
Travel speed - 460/70R24 Tires	mph (kph)	22.9	22.9	22.9	22.9
Travel speed - 540/70R24 Tires	mph (kph)	23.7	23.7	23.7	23.7
<b>Service brakes</b>					
Actuation		Hydraulic power assisted	Hydraulic power assisted	Hydraulic power assisted	Hydraulic power assisted
All four wheels		Standard	Standard	Standard	Standard
Type		Oil immersed discs	Oil immersed discs	Oil immersed discs	Oil immersed discs
Discs per axle		6 Front - 4 Rear axle	6 Front axle - 4 Rear axle	6 Front axle - 4 Rear axle	6 Front axle - 4 Rear axle
<b>Parking brake</b>					
Actuation		Front axle SAHR (Spring Actuated Hydraulic Release)	Front axle SAHR (Spring Actuated Hydraulic Release)	Front axle SAHR (Spring Actuated Hydraulic Release)	Front axle SAHR (Spring Actuated Hydraulic Release)
Type		Oil immersed discs	Oil immersed discs	Oil immersed discs	Oil immersed discs
<b>Axles</b>					
Limited slip differential front axle		●	●	●	●
Limited slip differential rear axle		—	—	●	—
<b>Capacities</b>					
Hydraulic oil tank	gal. (L)	27.7 (105)	27.7 (105)	27.7 (105)	27.7 (105)
Fuel tank / AdBlue tank	gal. (L)	36.9 (140) / 7.1 (27)	36.9 (140) / 7.1 (27)	36.9 (140) / 7.1 (27)	36.9 (140) / 7.1 (27)
Engine oil	gal. (L)	3.2 (12)	3.2 (12)	3.2 (12)	3.2 (12)
<b>Hydraulic</b>					
Variable pump	gpm (l/min)	36.9 (140)	36.9 (140)	36.9 (140)	36.9 (140)
Gear pump	gpm (l/min)	31.7 (120)	—	—	31.7 (120)
<b>Boom controls</b>					
Lift		Pilot	Pilot	Electro proportional	Pilot
Tilt		Pilot	Pilot	Electro proportional	Pilot
Extension		Electro proportional	Electro proportional	Electro proportional	Electro proportional
Headstock auxiliary		Electro hydraulic	Electro hydraulic	Electro proportional	Electro hydraulic
<b>Hydraulic cycle times (unloaded)</b>					
Lift / lower	(seconds)	7.4 / 5.6	6.7 / 5.2	6.7 / 5.2	7.4 / 5.6
Extend / retract	(seconds)	5.5 / 3.7	6.5 / 4.4	6.2 / 4.5	8.3 / 6.3
Bucket dump / bucket crowd	(seconds)	3.1 / 3.2	3.1 / 3.4	2.8 / 2.9	3.1 / 3.4
<b>Cab</b>					
Max noise level	[dB(A)]	75	75	75	75
Vision	degrees	360	360	360	360
Ventilation		Heater / blower / air conditioning	Heater / blower / air conditioning	Heater / blower / air conditioning	Heater / blower / air conditioning
Tiltable steering column		●	●	—	●
Tiltable and telescopic steering column		—	—	●	—
Single lever joystick		Cab mounted	Cab mounted	Seat mounted	Cab mounted
Steering mode options		2WS / 4WS / Crab	2WS / 4WS / Crab	2WS / 4WS / Crab	2WS / 4WS / Crab
<b>Steering mode selection</b>					
Manual selection with front & rear pilot lights		●	●	—	●
Manual selection with automatic alignment		—	—	●	—
<b>Wheels &amp; tires</b>					
Standard		460 / 70 R24	460 / 70 R24	460 / 70 R24	460 / 70 R24
Optional		500 / 70 R24	500 / 70 R24	500 / 70 R24	500 / 70 R24

**MODELS****LM6.32****LM7.42 Classic****LM7.42 Elite****LM9.35**

<b>Dimensions &amp; weight</b>			<b>LM6.32</b>	<b>LM7.42 Classic</b>	<b>LM7.42 Elite</b>	<b>LM9.35</b>
<b>A</b>	Wheel base	in. (mm)	118 (3000)	118 (3000)	118 (3000)	118 (3000)
<b>B</b>	Axle to carrier	in. (mm)	40.6 (1031)	50.5 (1285)	50.5 (1285)	50.5 (1513)
<b>C1</b>	Length carrier to counter weight	in. (mm)	191.3 (4858)	201.3 (5113)	201.3 (5113)	210.2 (5340)
<b>C2</b>	Length front tire to counter weight	in. (mm)	175.2 (4450)	175.2 (4450)	175.2 (4450)	175.2 (4450)
<b>D</b>	Overall length	in. (mm)	243.7 (6190)	253.9 (6451)	253.9 (6451)	262.7 (6672)
<b>E</b>	Wheel track	in. (mm)	73.7 (1873)	73.7 (1873)	73.7 (1873)	73.7 (1873)
<b>F</b>	Ground clearance	in. (mm)	16.3 (415)	16.3 (415)	16.3 (415)	16.3 (415)
<b>G</b>	Clearance under step	in. (mm)	21.7 (550)	21.7 (550)	21.7 (550)	21.7 (550)
<b>H</b>	Cab width	in. (mm)	40.2 (1020)	40.2 (1020)	40.2 (1020)	40.2 (1020)
<b>I</b>	Cab height	in. (mm)	96.3 (2447)	96.3 (2447)	96.3 (2447)	96.3 (2447)
<b>J</b>	Overall width (outside tires)	in. (mm)	95.7 (2340)	95.7 (2340)	95.7 (2340)	95.7 (2340)
<b>K</b>	Standard carrier attachment roll back angle	degrees	24	24	24	24
<b>L</b>	Standard carrier attachment dump angle	degrees	118	118	118	118
	Standard carrier total rotation angle (K+L)	degrees	142	142	142	142
<b>K</b>	Optional carrier attachment roll back angle	degrees	19	-	-	19
<b>L</b>	Optional carrier attachment dump angle	degrees	109	-	-	109
	Optional carrier total rotation angle (K+L)	degrees	131	-	-	131
	Turning radius over tires	in. (mm)	153.6 (3900)	153.6 (3900)	153.6 (3900)	153.6 (3900)
	Total weight with forks, full fuel tank and driver	lbs. (kg)	17,494 (7935)	17,637 (8000)	17,637 (8000)	18,916 (8580)

● Standard — Not available





# VALUE, SERVICE AND SOLUTIONS

There's a certain way of thinking that comes from living on a farm. Farming takes equal parts brain and brawn. Not to mention thick skin, calloused hands and a fair share of know how. Seasoned farmers know it helps to have equipment that's built by farmers, sold by farmers and used by farmers.

**Support at every step.** When you place your confidence in New Holland agricultural equipment, you get the finest in local support. Your New Holland dealer understands the many challenges you face and stands behind you at every step with the equipment, parts, service and financial solutions to make your job easier. Look to New Holland for a complete selection of equipment, including a full line of tractors, hay & forage equipment, harvesting, crop production and material handling equipment.

**Quality parts and service.** Turn to your New Holland dealer after the sale for expert, factory-trained service and genuine New Holland-branded parts. Your dealer has the very latest service updates and training to ensure your equipment keeps working productively season after season.

**Financing solutions.** Your New Holland dealer can tell you about smart ways to turn your financial challenges into opportunities with a portfolio of innovative financial services available through CNH Industrial Capital, including customized financing, leasing, insurance and the purchasing convenience of a Commercial Revolving Account.

For reliable equipment, parts and service — or just honest advice on farming and finance — turn to New Holland and your trusted New Holland dealer. We know. We're farmers, too.



We are proud to support the FFA.

Learn more at [www.newholland.com/na](http://www.newholland.com/na)

Design, materials and/or specifications are subject to change without notice and without liability therefor. Specifications are applicable to units sold in Canada, the United States, its territories and possessions, and may vary outside these areas.

© 2018 CNH Industrial America LLC. All rights reserved. New Holland is a trademark registered in the United States and many other countries, owned by or licensed to CNH Industrial N.V., its subsidiaries or affiliates. Any trademarks referred to herein, in association with goods and/or services of companies, other than owned by or licensed to CNH Industrial N.V., its subsidiaries or affiliates, are the property of those respective companies.



Safety begins with a thorough understanding of the equipment. Always make sure you and your operators read the Operator's Manual before using the equipment. Pay close attention to all safety and operating decals and never operate machinery without all shields, protective devices and structures in place.